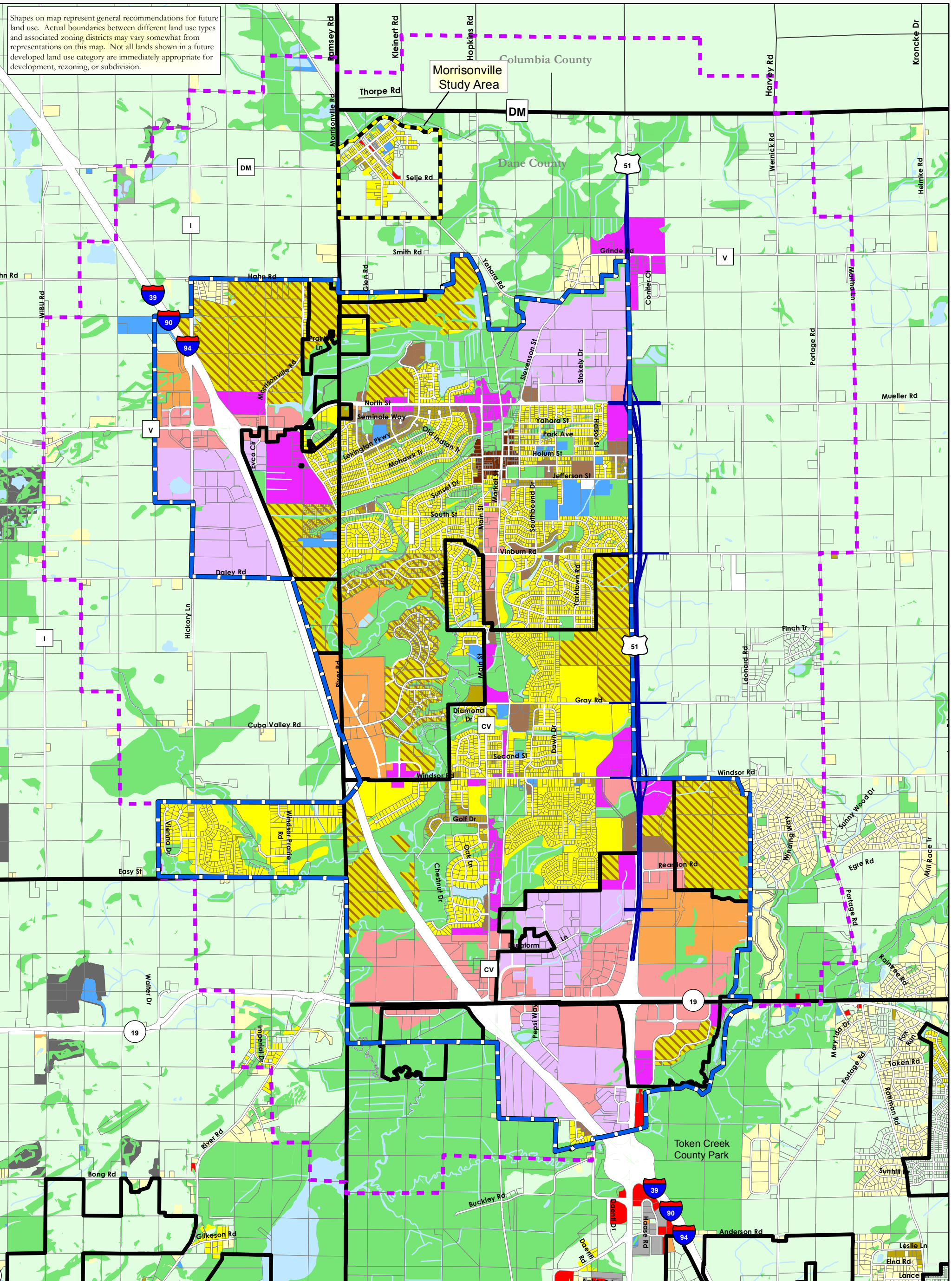


Shapes on map represent general recommendations for future land use. Actual boundaries between different land use types and associated zoning districts may vary somewhat from representations on this map. Not all lands shown in a future developed land use category are immediately appropriate for development, rezoning, or subdivision.

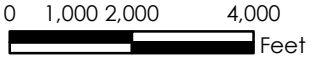


Village of DeForest Comprehensive Plan

9

Future Land Use

Adopted: August 7, 2006
 Amended: April 2, 2007
 April 21, 2008
 March 16, 2009
 March 1, 2010
 May 12, 2010
 March 15, 2011



Source: Dane County LIO, Dane County RPC, Vierbicher



County Boundary	Agricultural Preservation Area	Planned Mixed Use
Municipal Boundary (2011)	Single Family Residential - Unsewered	Planned Industrial/Business Park
Future Urban Service Area Boundary	Single Family Residential - Sewered	Government & Institutional
Parcel (2010)	Two-Family/Townhouse Residential	Industrial
Future Hwy 51 Alignment	Mixed Residential	Extraction
DeForest Extraterritorial Jurisdiction	Planned Neighborhood	Parks & Public Recreation/Environmental Corridor
	Planned Commercial	Surface Water
	Downtown	
	Office/Research	

Note: Outside of the Village's Extraterritorial Jurisdiction, Existing Land Use (2005) is Shown, as Opposed to Future Land Use